



To arrange a viewing
please call 01908 675747

MODERN ground floor apartment in a GOOD CONDITION throughout, boasting a VERY SPACIOUS LOUNGE/DINER...

In further detail, this two bedroom ground floor apartment briefly comprises of an entrance hall with storage cupboards, two double bedrooms, a good sized family bathroom, a modern kitchen and a large lounge/diner. Other benefits of the property include a security entrance and allocated parking.

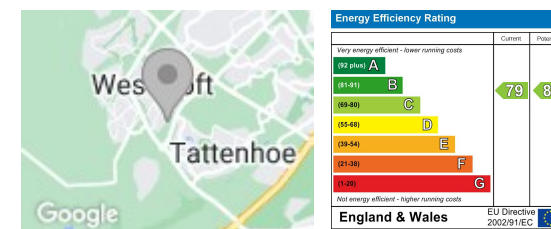
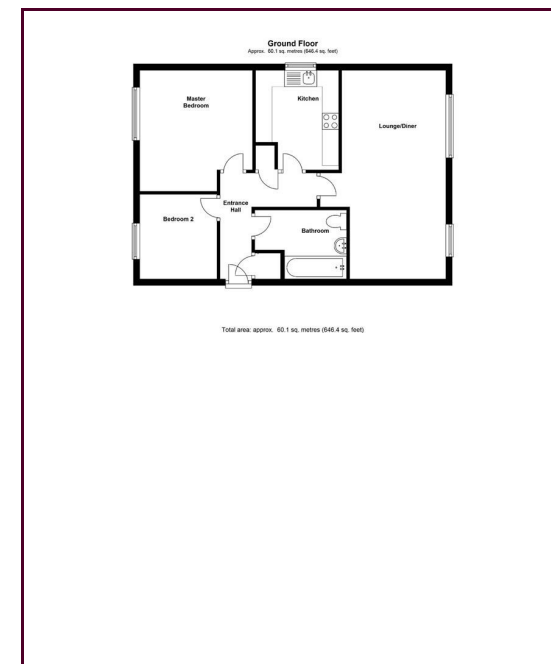
Offered unfurnished and available now. EPC Rating: C.

Minimum Contract Length: 6 Months
Council Tax Band: B
Deposit equivalent to 5 weeks rent

- Available Now
- Ground Floor Apartment
- Modern Kitchen
- Large Lounge/Diner
- Allocated Parking
- Spacious Family Bathroom

LOCATION: WESTCROFT

Westcroft is located to the west of the city and incorporates a large district shopping area with a Morrisons supermarket, a library and other large retail units, situated approximately 4 miles by car from the city centre. Westcroft also has a playing field in the centre and an extensive children's play area.



Draft Details

These details have been submitted to our clients but at the moment have not been approved by them. We therefore, cannot guarantee their accuracy and they are distributed on this basis. Please ensure you have a copy of our approved details before committing yourself to any expense.

Whilst we endeavour to make our sales details accurate and reliable, if there is any point which is of particular importance to you, please contact the office and we shall be pleased to check any information for you. Do so, especially if travelling any distance to view the property.

The mention of any appliances and/or services within these details does not imply they are in full and efficient working order.

Any plans included within these details are a GUIDE TO THE LAYOUT OF THE PROPERTY ONLY and are NOT DRAWN TO SCALE. Dimensions are approximate.

Mortgage Information

We can offer independent mortgage advice. Please call us to discuss your requirements. Your home may be repossessed if you do not keep up repayment on your mortgage or any loans secured on it.

Property Valuations

We have some of the most experienced property valuers in Milton Keynes and would welcome the opportunity to carry out a VALUATION and MARKET APPRAISAL of your home.

Viewing Arrangements

Please call us to make an appointment to view this property.

Monday to Friday 9.00 am - 6.00 pm
 Saturday 9.00 am - 4.00 pm
 Sunday CLOSED

